

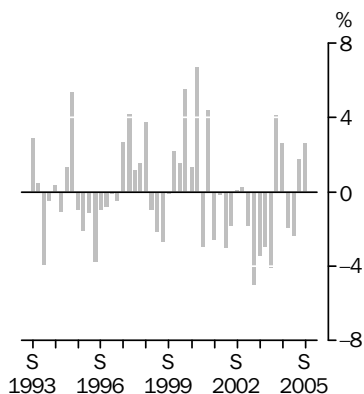
# INTERNATIONAL TRADE PRICE INDEXES

AUSTRALIA

EMBARGO: 11.30AM (CANBERRA TIME) FRI 21 OCT 2005

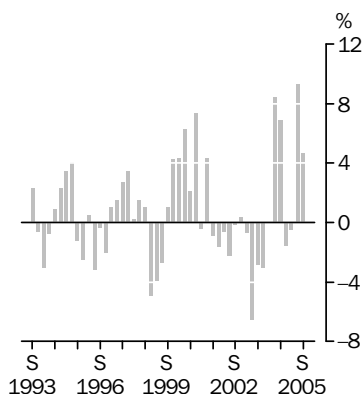
## IMPORT PRICE INDEX: all groups

Quarterly % change



## EXPORT PRICE INDEX: all groups

Quarterly % change



## KEY FIGURES

	<i>Jun Qtr 05 to Sep Qtr 05</i> % change	<i>Sep Qtr 04 to Sep Qtr 05</i> % change
<b>Import Price Index all groups</b>	<b>2.6</b>	<b>-0.1</b>
Food and live animals	1.4	4.5
Beverages and tobacco	3.0	1.7
Crude materials	2.0	1.0
Mineral fuels, etc.	17.6	39.9
Animal and vegetable oils, etc.	-0.2	-4.9
Chemicals and related products	0.6	0.7
Manufactured goods by material	0.5	-1.1
Machinery and transport equipment	0.3	-6.9
Miscellaneous manufactured articles	0.9	-3.7
Commodities and transactions n.e.s.	4.1	2.3
<b>Export Price Index all groups</b>	<b>4.7</b>	<b>12.0</b>
Food and live animals	1.8	0.1
Beverages and tobacco	-0.2	-2.0
Crude materials	1.5	16.5
Mineral fuels, etc.	16.3	40.3
Chemicals and related products	-1.5	2.1
Manufactured goods by material	-0.9	1.7
Machinery and transport equipment	0.6	-0.7
Miscellaneous manufactured articles	4.1	2.8

## KEY POINTS

### IMPORT PRICE INDEX

- The Import Price Index increased by 2.6% in the September quarter 2005, with crude and other petroleum oils being the main contributors to the increase. There were no significant offsetting price decreases.

### EXPORT PRICE INDEX

- The Export Price Index increased by 4.7% in the September quarter 2005, following a 9.3% increase in the June quarter 2005. The increase this quarter was again mainly driven by price rises for materials used in steel making, such as coking coal and iron ores. Price rises for exports of crude petroleum oils and gases, as well as gold, aluminium and live bovine animals also contributed to the increase this quarter. The most significant offsetting price decreases were observed for exports of nickel, fresh beef and alumina.

## INQUIRIES

For further information about these and related statistics, contact the National Information and Referral Service on 1300 135 070 or Steve Whennan on Canberra (02) 6252 6251.

# NOTES

## FORTHCOMING ISSUES

<i>ISSUE (Quarter)</i>	<i>RELEASE DATE</i>
December 2005	20 January 2006
March 2006	21 April 2006

.....

## CHANGES IN THIS ISSUE

Both the Import Price Index and the Export Price Index have been reweighted in the September quarter 2005. This is in line with the ABS' policy of reweighting these indexes annually in the September quarter, as explained in paragraphs 8–10 of the Explanatory Notes. The new weighting patterns are provided in an Appendix to this issue.

As a consequence of this annual reweighting, points contribution data for June quarter 2005 shown in Tables 2, 8 and 17 differ from those published in the previous issue of this publication.

## ROUNDING

Any discrepancies between totals and sums of components in this publication are due to rounding.

## RELATED STATISTICS

For more information about statistics in this publication and about other 'ABS data available on request', contact Steve Whennan on (02) 6252 6251, or email <[steve.whennan@abs.gov.au](mailto:steve.whennan@abs.gov.au)>.

.....

## ABBREVIATIONS

ABS	Australian Bureau of Statistics
ADP	automatic data processing
AHECC	Australian Harmonised Export Commodity Classification
ANZSIC	Australian and New Zealand Standard Industrial Classification
BEC	Classification by Broad Economic Categories
f.o.b.	free on board
HTISC	Harmonized Tariff Item Statistical Classification
n.e.s.	not elsewhere specified
SITC	Standard International Trade Classification

Dennis Trewin  
Australian Statistician

## LIST OF TABLES

page

### INTERNATIONAL TRADE PRICE INDEXES

<b>1</b>	Import price index, all groups, index numbers and percentage changes . . . . .	4
<b>2</b>	Import price index, SITC contribution to all groups index . . . . .	5
<b>3</b>	Import price index, SITC section . . . . .	6
<b>4</b>	Import price index, BEC end use class, broad balance of payments categories, consumption goods . . . . .	7
<b>5</b>	Import price index, BEC end use class, broad balance of payments categories, capital goods . . . . .	8
<b>6</b>	Import price index, BEC end use class, broad balance of payments categories, intermediate and other merchandise goods . . . . .	9
<b>7</b>	Export price index, all groups, index numbers and percentage changes . . . . .	11
<b>8</b>	Export price index, SITC contribution to all groups index . . . . .	12
<b>9</b>	Export price index, selected SITC section . . . . .	13
<b>10</b>	Export price index, balance of payments groups, rural goods . . . . .	14
<b>11</b>	Export price index, balance of payments groups, non-rural goods . . . . .	15

### ADDITIONAL TABLES AVAILABLE ON ABS WEB SITE

<b>12</b>	Import price index, by selected SITC division	
<b>13</b>	Import price index, by selected HTISC section	
<b>14</b>	Import price index, by selected ANZSIC industry of origin division	
<b>15</b>	Import price index, by selected ANZSIC industry of origin subdivision	
<b>16</b>	Import price index, by BEC category	
<b>17</b>	Export price index, AHECC and ANZSIC contribution to all groups index	
<b>18</b>	Export price index, by selected AHECC section	
<b>19</b>	Export price index, by selected ANZSIC industry of origin division and subdivision	

## IMPORT PRICE INDEX(a): All groups index numbers and percentage changes

<i>Period</i>	<i>Index numbers</i>	<i>% change from previous period</i>	<i>% change from corresponding quarter of previous year</i>
<b>2001-02</b>	132.3	-1.5	..
<b>2002-03</b>	126.0	-4.8	..
<b>2003-04</b>	112.3	-10.9	..
<b>2004-05</b>	112.8	0.4	..
<b>2000</b>			
December	137.0	6.7	15.8
<b>2001</b>			
March	132.9	-3.0	10.7
June	138.7	4.4	9.5
September	135.1	-2.6	5.2
December	134.9	-0.1	-1.5
<b>2002</b>			
March	130.8	-3.0	-1.6
June	128.4	-1.8	-7.4
September	128.5	0.1	-4.9
December	128.8	0.2	-4.5
<b>2003</b>			
March	126.4	-1.9	-3.4
June	120.1	-5.0	-6.5
September	116.0	-3.4	-9.7
December	112.6	-2.9	-12.6
<b>2004</b>			
March	108.0	-4.1	-14.6
June	112.4	4.1	-6.4
September	115.3	2.6	-0.6
December	113.1	-1.9	0.4
<b>2005</b>			
March	110.4	-2.4	2.2
June	112.3	1.7	-0.1
September	115.2	2.6	-0.1

.. not applicable

(a) Reference base of each index: 1989-90 = 100.0.

## IMPORT PRICE INDEX(a): SITC contribution to all groups index

Category	Jun Qtr 2005(b)	Sep Qtr 2005	Jun Qtr 2005 to Sep Qtr 2005
ALL GROUPS			
All groups	112.3	115.2	2.9
SITC SECTIONS—CONTRIBUTION TO ALL GROUPS (INDEX POINTS)			
0 Food and live animals chiefly for food	4.39	4.45	0.06
1 Beverages and tobacco	0.78	0.80	0.02
2 Crude materials, inedible, except fuels	1.53	1.56	0.03
3 Mineral fuels, lubricants and other related materials	13.26	15.59	2.33
4 Animal and vegetable oils, etc.	0.29	0.29	—
5 Chemicals and related products n.e.s.	13.64	13.73	0.09
6 Manufactured goods classified chiefly by material	13.47	13.53	0.06
7 Machinery and transport equipment	49.64	49.78	0.14
8 Miscellaneous manufactured articles	14.77	14.91	0.14
9 Commodities and transactions n.e.s.	0.51	0.53	0.02
SELECTED SITC DIVISIONS—CONTRIBUTION TO ALL GROUPS (INDEX POINTS)			
3 Fish, crustaceans and molluscs and preparations thereof	0.77	0.76	-0.01
24 Cork and wood	0.49	0.50	0.01
33 Petroleum, petroleum products and related materials	13.12	15.43	2.31
51 Organic chemicals	2.18	2.11	-0.07
52 Inorganic chemicals	0.76	0.79	0.03
59 Chemical materials and products n.e.s.	1.23	1.26	0.03
64 Paper, paperboard and articles made of paper	1.94	1.97	0.03
65 Textile yarn, fabrics and related products	1.77	1.79	0.02
69 Manufactures of metals n.e.s.	2.82	2.84	0.02
71 Power generating machinery and equipment	2.56	2.47	-0.09
72 Machinery specialised for particular industries	4.54	4.55	0.01
74 General industrial machinery, equipment and parts	6.17	6.16	-0.01
75 Office machines and ADP machines	6.14	6.15	0.01
76 Telecommunications and sound recording equipment	6.17	6.20	0.03
77 Electrical machinery, etc. and parts thereof	5.79	5.83	0.04
78 Road vehicles	14.72	14.77	0.05
79 Other transport equipment	3.02	3.11	0.09
87 Professional, scientific and controlling instruments and apparatus n.e.s.	2.74	2.75	0.01
89 Miscellaneous manufactured articles n.e.s.	5.06	5.11	0.05

— nil or rounded to zero (including null cells)

(b) Differs from previously published June quarter 2005 due to annual reweighting.

(a) Reference base of each index 1989-90 = 100.0.

## IMPORT PRICE INDEX(a): Selected SITC section

<i>Period</i>	<i>Food and live animals chiefly for food (0)</i>	<i>Beverages and tobacco (1)</i>	<i>Crude materials, inedible, except fuels (2)</i>	<i>Mineral fuels, lubricants and other materials (3)</i>	<i>Animal and vegetable oils, fats and waxes (4)</i>	<i>Chemicals and related products n.e.s. (5)</i>	<i>Manufactured goods classified chiefly by material (6)</i>	<i>Machinery and transport equipment (7)</i>	<i>Miscellaneous manufactured articles (8)</i>	<i>Commodities and transactions n.e.s. (9)</i>
<b>2001-02</b>	122.5	132.9	124.9	158.4	122.1	128.5	133.9	128.2	143.0	110.8
<b>2002-03</b>	125.1	139.9	123.1	174.9	141.0	120.2	129.2	118.7	132.1	115.4
<b>2003-04</b>	116.9	134.1	112.2	156.2	134.9	113.2	118.9	103.3	114.4	110.2
<b>2004-05</b>	120.0	128.2	115.1	202.3	142.2	116.8	123.2	98.3	111.8	113.3
<b>2000</b>										
December	121.9	129.2	147.8	216.5	126.1	125.9	132.8	131.3	140.6	101.5
<b>2001</b>										
March	121.4	128.7	137.8	167.5	117.5	128.7	131.3	129.6	139.8	99.4
June	124.3	131.0	133.3	183.9	120.1	137.1	136.1	134.0	146.2	101.1
September	121.3	132.1	127.6	180.4	121.2	131.1	133.8	130.1	144.1	107.1
December	122.9	133.1	124.7	156.5	123.9	132.8	135.8	131.3	146.4	109.0
<b>2002</b>										
March	123.8	133.7	125.1	136.0	122.7	127.8	134.4	127.9	143.0	112.8
June	121.9	132.6	122.3	160.5	120.5	122.1	131.6	123.4	138.3	114.2
September	124.1	139.9	124.3	165.1	137.9	122.0	131.0	123.3	136.6	115.1
December	126.3	139.2	123.7	179.3	143.6	122.3	131.4	121.9	135.6	115.6
<b>2003</b>										
March	126.0	140.9	122.5	191.5	143.2	119.6	129.1	117.4	131.4	120.0
June	123.8	139.4	121.7	163.6	139.2	117.0	125.2	112.1	124.9	110.9
September	119.2	134.9	118.0	156.3	134.5	114.6	121.6	107.9	120.3	111.2
December	117.0	134.7	112.4	152.4	135.7	112.4	118.8	104.4	115.2	110.5
<b>2004</b>										
March	114.5	134.0	106.6	145.2	135.3	110.6	115.2	99.3	109.1	107.8
June	116.8	132.8	111.6	171.0	134.1	115.1	120.0	101.6	112.9	111.1
September	119.5	131.1	117.2	192.2	148.3	117.4	124.5	102.6	115.1	114.2
December	119.4	128.0	114.4	200.1	143.6	116.6	123.2	99.1	112.0	115.8
<b>2005</b>										
March	117.7	124.4	112.6	188.2	135.5	115.7	122.4	96.2	110.1	110.8
June	123.2	129.4	116.1	228.7	141.4	117.5	122.5	95.2	109.8	112.2
September	124.9	133.3	118.4	268.9	141.1	118.2	123.1	95.5	110.8	116.8

(a) Reference base of each index: 1989-90 = 100.0.

## IMPORT PRICE INDEX(a): Consumption goods

Period	BEC END USE	BROAD BALANCE OF PAYMENTS CATEGORIES					
	Consumption goods total	Food and beverages, mainly for consumption	Household electrical items	Non- industrial transport equipment	Textiles, clothing and footwear	Toys, books and leisure goods	Consumption goods n.e.s.
<b>2001-02</b>	139.4	129.9	118.6	169.8	137.8	145.4	132.7
<b>2002-03</b>	133.5	132.8	107.9	164.7	127.7	138.0	126.4
<b>2003-04</b>	121.8	125.9	93.2	156.3	107.9	121.2	116.6
<b>2004-05</b>	119.4	128.1	85.7	152.2	103.8	118.7	115.4
<b>2000</b>							
December	137.7	127.8	121.0	160.7	133.7	144.4	132.5
<b>2001</b>							
March	137.1	128.9	119.7	162.0	132.9	143.1	131.4
June	142.4	131.4	121.5	170.3	140.8	145.5	137.1
September	139.8	128.8	119.6	170.6	137.8	144.1	133.8
December	141.7	130.7	120.1	172.7	140.1	147.8	135.4
<b>2002</b>							
March	139.7	131.4	119.0	169.6	138.7	147.2	132.1
June	136.4	128.8	115.8	166.1	134.7	142.3	129.3
September	136.0	132.2	113.8	165.9	132.7	140.7	128.6
December	135.7	133.7	109.0	166.1	132.1	140.5	128.6
<b>2003</b>							
March	133.4	133.4	107.0	164.7	126.7	138.1	126.3
June	129.0	131.9	101.8	162.0	119.4	132.8	121.9
September	125.5	127.7	97.5	158.9	114.7	128.3	119.3
December	122.3	126.0	94.4	156.8	109.9	122.3	116.5
<b>2004</b>							
March	118.3	123.9	89.9	154.6	101.9	115.2	113.7
June	120.9	125.9	90.9	154.9	105.2	118.8	116.8
September	122.2	128.2	89.7	154.0	108.4	121.4	118.2
December	119.9	127.2	85.9	153.8	104.8	118.9	116.1
<b>2005</b>							
March	117.6	125.5	84.6	151.3	101.0	117.3	113.9
June	117.8	131.3	82.7	149.5	100.8	117.2	113.4
September	119.0	133.2	84.4	149.4	101.9	118.0	114.7

(a) Reference base of each index: 1989-90 = 100.0.

## IMPORT PRICE INDEX(a): Capital goods

Period	BEC END USE	BROAD BALANCE OF PAYMENTS CATEGORIES					
	Capital goods total	Machinery and industrial equipment	ADP equipment	Telecommunications equipment	Civil aircraft	Industrial transport equipment n.e.s.	Capital goods n.e.s.
<b>2001-02</b>	125.7	155.2	43.6	67.3	173.8	178.2	155.3
<b>2002-03</b>	116.7	145.1	35.5	62.9	158.8	175.4	143.9
<b>2003-04</b>	101.9	130.6	25.9	52.0	136.7	165.5	129.0
<b>2004-05</b>	97.3	130.1	22.4	43.7	137.0	163.5	124.4
<b>2000</b>							
December	128.4	154.5	53.2	68.6	162.8	174.9	152.9
<b>2001</b>							
March	126.8	152.8	51.7	67.9	162.7	172.6	151.7
June	131.2	158.7	52.1	68.9	175.7	179.4	159.0
September	127.4	156.2	46.2	67.6	174.7	179.3	155.3
December	129.0	160.9	45.7	68.0	178.0	181.6	158.0
<b>2002</b>							
March	125.3	155.2	42.8	67.1	176.1	177.4	156.3
June	121.1	148.6	39.6	66.5	166.5	174.4	151.5
September	121.4	149.1	38.9	66.5	164.6	178.9	147.8
December	119.9	147.5	37.5	66.7	164.9	176.6	147.1
<b>2003</b>							
March	115.4	144.5	34.4	61.7	157.5	174.4	143.2
June	110.1	139.2	31.2	56.7	148.2	171.7	137.6
September	106.3	134.8	28.8	54.6	144.1	169.0	133.9
December	102.6	130.0	26.5	53.0	138.5	166.5	129.0
<b>2004</b>							
March	98.3	125.9	23.7	50.9	128.3	162.2	126.0
June	100.5	131.5	24.4	49.6	135.9	164.3	127.2
September	101.4	133.7	24.7	48.4	140.0	167.6	128.4
December	98.2	129.9	22.8	46.1	137.3	164.5	123.8
<b>2005</b>							
March	95.3	128.6	21.4	40.4	133.5	162.8	123.5
June	94.2	128.2	20.6	39.8	137.2	158.9	121.9
September	94.2	127.3	20.7	39.5	140.0	160.0	121.9

(a) Reference base of each index: 1989-90 = 100.0.



## IMPORT PRICE INDEX(a): Intermediate &amp; other merchandise goods

Period	BROAD BALANCE OF PAYMENTS CATEGORIES								
	Intermediate and other merchandise goods total	Intermediate and other merchandise goods total excluding non-monetary gold	Food and beverages, mainly for industry	Primary industrial supplies n.e.s.	Fuels and lubricants	Parts for transport equipment	Parts for ADP equipment	Other parts for capital goods	Organic and inorganic chemicals
<b>2001-02</b>	126.0	126.2	103.1	125.2	183.3	153.7	35.7	122.9	124.2
<b>2002-03</b>	121.7	121.7	125.7	126.9	204.0	146.0	28.5	111.9	110.0
<b>2003-04</b>	108.2	108.4	115.8	115.2	182.8	130.4	20.6	94.0	103.7
<b>2004-05</b>	114.8	115.1	117.5	116.4	238.3	127.6	17.9	89.2	110.6
<b>2000</b>									
December	135.6	136.1	113.4	128.2	253.4	151.3	44.2	129.2	121.9
<b>2001</b>									
March	128.1	128.4	95.6	128.6	194.6	148.8	43.0	127.6	124.6
June	134.7	135.1	100.6	133.7	213.7	154.9	43.4	132.0	135.2
September	130.9	131.2	102.4	130.2	209.9	154.6	38.0	125.0	128.6
December	128.3	128.5	100.0	122.2	181.0	155.3	37.5	126.0	130.4
<b>2002</b>									
March	122.7	122.8	101.4	125.2	156.2	154.9	35.0	123.0	123.6
June	122.2	122.3	108.7	123.3	186.2	149.9	32.2	117.7	114.1
September	122.6	122.7	119.1	124.8	192.0	148.9	31.4	116.7	113.2
December	124.6	124.7	127.3	128.1	209.2	149.4	30.2	115.7	112.9
<b>2003</b>									
March	123.5	123.6	131.8	128.4	223.8	144.9	27.6	110.4	108.9
June	115.9	115.9	124.6	126.2	190.8	140.6	24.9	104.8	104.8
September	111.3	111.4	117.2	122.3	182.6	134.4	22.9	100.1	104.1
December	108.1	108.2	115.8	115.9	177.9	134.1	21.2	95.2	102.7
<b>2004</b>									
March	103.1	103.2	115.6	109.9	169.9	125.0	18.9	88.9	101.1
June	110.3	110.6	114.4	112.6	200.6	128.2	19.5	91.9	106.8
September	115.7	116.0	120.4	118.5	225.8	133.1	19.7	93.3	109.1
December	114.5	114.8	117.7	119.6	235.7	127.9	18.2	89.9	108.6
<b>2005</b>									
March	111.7	112.0	112.7	113.3	221.4	124.7	17.1	87.1	110.4
June	117.1	117.4	119.1	114.3	270.2	124.5	16.4	86.5	114.3
September	123.2	123.5	119.1	118.4	318.5	126.2	16.5	86.8	113.0

(a) Reference base of each index: 1989-90 = 100.0.

BROAD BALANCE OF PAYMENTS CATEGORIES *continued*

<i>Period</i>	<i>Paper and paperboard</i>	<i>Textile yarn and fabrics</i>	<i>Iron and steel</i>	<i>Plastics</i>	<i>Processed industrial supplies n.e.s.</i>	<i>Non- monetary gold</i>
<b>2001-02</b>	122.5	126.3	111.9	137.6	139.0	110.9
<b>2002-03</b>	113.6	117.8	114.4	128.9	134.2	115.5
<b>2003-04</b>	101.5	103.3	113.2	113.0	122.4	110.3
<b>2004-05</b>	93.8	105.1	141.9	122.1	126.5	113.4
<b>2000</b>						
December	121.3	129.7	118.3	138.1	137.5	101.6
<b>2001</b>						
March	121.2	126.7	115.7	136.5	137.9	99.5
June	126.1	132.3	118.3	142.6	141.0	101.3
September	122.3	128.2	112.9	140.0	139.5	107.2
December	125.0	129.2	114.3	140.5	141.7	109.1
<b>2002</b>						
March	122.3	127.0	111.7	137.6	138.8	112.9
June	120.5	120.8	108.7	132.4	136.1	114.3
September	116.5	121.3	111.9	134.5	135.8	115.2
December	115.4	120.7	116.1	131.2	136.3	115.7
<b>2003</b>						
March	112.4	116.6	115.9	126.2	134.5	120.1
June	110.2	112.6	113.7	123.8	130.0	111.0
September	105.6	107.5	112.4	117.2	125.8	111.3
December	103.9	102.1	109.1	112.0	122.3	110.6
<b>2004</b>						
March	99.3	98.7	106.6	106.7	118.3	108.0
June	97.0	105.0	124.5	116.2	123.0	111.3
September	96.0	108.4	140.3	120.7	127.4	114.3
December	93.9	105.8	138.6	121.2	126.1	115.9
<b>2005</b>						
March	92.7	103.5	143.5	121.9	124.9	110.9
June	92.7	102.8	145.3	124.6	127.5	112.3
September	93.9	103.4	143.4	126.3	128.6	116.9

(a) Reference base of each index: 1989-90 = 100.0.

## EXPORT PRICE INDEX (a): All groups, index numbers and percentage changes

<i>Period</i>	<i>Index numbers</i>	<i>% change from previous period</i>	<i>% change from corresponding quarter of previous year</i>
<b>2001-02</b>	116.7	1.7	..
<b>2002-03</b>	111.7	-4.3	..
<b>2003-04</b>	102.5	-8.2	..
<b>2004-05</b>	116.4	13.6	..
<b>2000</b>			
December	115.8	7.3	21.4
<b>2001</b>			
March	115.3	-0.4	15.9
June	120.3	4.3	13.8
September	119.2	-0.9	10.5
December	117.2	-1.7	1.2
<b>2002</b>			
March	116.4	-0.7	1.0
June	113.8	-2.2	-5.4
September	113.6	-0.2	-4.7
December	114.0	0.4	-2.7
<b>2003</b>			
March	113.2	-0.7	-2.7
June	105.8	-6.5	-7.0
September	102.8	-2.8	-9.5
December	99.6	-3.1	-12.6
<b>2004</b>			
March	99.6	0.0	-12.0
June	108.0	8.4	2.1
September	115.4	6.9	12.3
December	113.6	-1.6	14.1
<b>2005</b>			
March	113.0	-0.5	13.5
June	123.5	9.3	14.4
September	129.3	4.7	12.0

.. not applicable

(a) Reference base of each index: 1989-90 = 100.0.

## EXPORT PRICE INDEX(a): SITC contribution to all groups index

Category	Jun Qtr 2005(b)	Sep Qtr 2005	Jun Qtr 2005 to Sep Qtr 2005	
ALL GROUPS				
All groups	123.5	129.3	5.8	
SELECTED SITC SECTIONS—CONTRIBUTION TO ALL GROUPS (INDEX POINTS)				
0	Food and live animals	18.89	19.22	0.33
1	Beverages and tobacco	2.69	2.68	-0.01
2	Crude materials, inedible, except fuels	23.17	23.51	0.34
3	Mineral fuels, lubricants and other related materials	29.47	34.26	4.79
5	Chemicals and related products n.e.s.	10.10	9.94	-0.16
6	Manufactured goods classified chiefly by material	15.49	15.36	-0.13
7	Machinery and transport equipment	11.47	11.52	0.05
8	Miscellaneous manufactured articles	4.07	4.23	0.16
SELECTED SITC DIVISIONS—CONTRIBUTION TO ALL GROUPS (INDEX POINTS)				
00	Live animals other than animals of division 03	0.80	1.02	0.22
01	Meat and meat preparations	6.11	6.34	0.23
02	Dairy products and eggs	2.39	2.24	-0.15
03	Fish, crustaceans and molluscs and preparations thereof	1.24	1.21	-0.03
04	Cereals and cereal preparations	4.63	4.61	-0.02
05	Vegetables and fruit	1.22	1.29	0.07
11	Beverages	2.61	2.60	-0.01
21	Hides, skins and furskins, raw	0.55	0.50	-0.05
26	Textile fibres and their wastes	3.03	2.94	-0.09
28	Metalliferous ores and metal scrap	16.91	17.35	0.44
32	Coal, coke and briquettes	18.59	22.28	3.69
33	Petroleum, petroleum products and related materials	7.69	8.41	0.72
52	Inorganic chemicals	5.00	4.82	-0.18
54	Medicinal and pharmaceutical products	2.70	2.70	—
61	Leather, leather manufactures, n.e.s. and dressed furskins	0.37	0.37	—
67	Iron and steel	2.60	2.44	-0.16
68	Non-ferrous metals	9.16	9.21	0.05
71-75	Power generating machinery and equipment	4.32	4.31	-0.01
76-77	Telecommunications and electrical machinery n.e.s.	2.15	2.17	0.02
78	Road vehicles	3.80	3.82	0.02
79	Other transport equipment	1.19	1.22	0.03
89	Miscellaneous manufactured articles n.e.s.	2.34	2.51	0.17

— nil or rounded to zero (including null cells)

(b) Differs from previously published June quarter 2005 due to annual reweighting.

(a) Reference base of each index: 1989-90 = 100.0.

## EXPORT PRICE INDEX(a): Selected SITC section

<i>Period</i>	<i>Food and live animals chiefly for food (0)</i>	<i>Beverages and tobacco (1)</i>	<i>Crude materials, inedible, except fuels (2)</i>	<i>Mineral fuels, lubricants and other related materials (3)</i>	<i>Chemicals and related products n.e.s. (5)</i>	<i>Manufactured goods classified chiefly by material (6)</i>	<i>Machinery and transport equipment (7)</i>	<i>Miscellaneous manufactured articles (8)</i>
<b>2001-02</b>	118.9	142.8	99.0	164.7	113.0	105.1	105.6	119.2
<b>2002-03</b>	109.3	143.8	97.0	160.9	100.4	102.1	100.6	104.5
<b>2003-04</b>	100.7	124.4	90.0	139.4	97.2	100.6	89.8	90.8
<b>2004-05</b>	106.8	126.4	103.1	184.9	108.3	121.1	88.4	89.2
<b>2000</b>								
December	108.3	137.4	94.7	166.7	122.1	119.5	105.1	120.3
<b>2001</b>								
March	111.3	138.8	96.3	161.1	120.9	116.8	104.7	119.2
June	117.5	140.1	102.4	174.8	121.7	118.8	105.8	121.1
September	118.2	142.8	99.9	174.1	118.4	110.0	106.4	121.0
December	121.5	141.4	98.0	166.3	115.1	103.2	107.0	121.3
<b>2002</b>								
March	120.7	145.1	100.6	159.4	111.0	103.4	105.8	119.9
June	115.0	142.0	97.5	158.9	107.3	103.6	103.1	114.7
September	111.3	146.0	96.4	163.7	106.7	103.8	103.7	109.9
December	111.9	145.5	98.5	166.4	101.1	103.7	102.8	107.5
<b>2003</b>								
March	110.7	143.7	99.8	163.9	99.0	103.5	100.0	103.2
June	103.3	140.0	93.2	149.4	94.7	97.2	96.0	97.3
September	100.5	126.0	90.4	142.4	93.9	95.6	94.2	95.3
December	99.2	122.7	86.7	134.7	90.1	95.5	89.4	90.2
<b>2004</b>								
March	100.2	122.5	87.8	127.3	98.6	100.5	86.5	88.0
June	103.0	126.3	95.0	153.3	106.1	110.7	89.0	89.6
September	108.6	128.9	100.2	177.1	108.2	121.0	89.6	90.4
December	106.2	125.5	98.7	174.5	106.2	119.7	88.3	88.7
<b>2005</b>								
March	105.5	124.4	98.6	174.3	106.4	119.7	87.0	88.3
June	106.8	126.6	115.0	213.6	112.2	124.1	88.5	89.2
September	108.7	126.3	116.7	248.4	110.5	123.0	89.0	92.9

(a) Reference base of each index: 1989-90 = 100.0.

## BALANCE OF PAYMENTS GROUPS

<i>Period</i>	<i>Rural goods total</i>	<i>Meat and meat preparations</i>	<i>Cereal grains and cereal preparations</i>	<i>Wool and sheepskins</i>	<i>Other rural</i>
<b>2001-02</b>	<b>107.7</b>	133.8	105.3	75.6	141.0
<b>2002-03</b>	<b>104.0</b>	118.5	104.8	94.8	125.1
<b>2003-04</b>	<b>95.1</b>	120.4	93.7	78.1	113.5
<b>2004-05</b>	<b>97.2</b>	137.2	87.4	70.8	117.4
<b>2000</b>					
December	<b>96.9</b>	110.4	97.5	62.6	133.3
<b>2001</b>					
March	<b>100.3</b>	115.9	100.9	67.0	135.7
June	<b>106.2</b>	130.6	105.6	74.1	138.8
September	<b>107.2</b>	129.0	105.1	72.4	143.9
December	<b>108.4</b>	137.9	106.6	66.8	146.0
<b>2002</b>					
March	<b>109.6</b>	136.6	107.9	77.2	142.5
June	<b>105.7</b>	131.7	101.6	85.9	131.4
September	<b>103.5</b>	123.7	100.9	83.6	130.5
December	<b>106.1</b>	120.7	107.5	96.2	127.8
<b>2003</b>					
March	<b>107.1</b>	116.4	111.5	104.3	125.1
June	<b>99.3</b>	113.3	99.3	95.0	117.1
September	<b>96.2</b>	109.8	97.8	84.1	116.3
December	<b>94.4</b>	121.1	92.3	79.0	111.6
<b>2004</b>					
March	<b>94.1</b>	126.2	90.7	74.8	111.1
June	<b>95.8</b>	124.4	94.1	74.4	115.1
September	<b>100.3</b>	138.6	94.9	76.7	118.9
December	<b>96.8</b>	138.7	85.7	71.6	116.3
<b>2005</b>					
March	<b>95.3</b>	136.0	84.5	68.0	115.6
June	<b>96.2</b>	135.5	84.3	66.7	118.9
September	<b>97.4</b>	140.7	84.0	64.9	120.4

(a) Reference base of each index: 1989-90 = 100.0.

## BALANCE OF PAYMENTS GROUPS

<i>Period</i>	<i>Non-rural goods total (excluding non- monetary gold)</i>	<i>Metal ores and minerals</i>	<i>Coal, coke and briquettes</i>	<i>Other minerals</i>	<i>Metals (excluding non- monetary gold)</i>	<i>Machinery</i>	<i>Transport equipment</i>	<i>Other manufactures</i>	<i>Other non- rural</i>	<i>Non- monetary gold</i>
<b>2001-02</b>	<b>123.7</b>	116.4	136.9	238.0	102.2	94.2	131.7	121.4	87.7	112.5
<b>2002-03</b>	<b>117.1</b>	103.3	120.3	258.7	99.4	89.4	126.4	112.5	82.4	117.1
<b>2003-04</b>	<b>107.3</b>	99.9	99.1	234.6	100.2	79.8	112.7	103.7	69.1	111.8
<b>2004-05</b>	<b>126.8</b>	124.8	139.9	289.2	125.4	78.9	110.4	107.2	73.0	114.9
<b>2000</b>										
December	<b>128.5</b>	121.2	115.6	281.8	116.9	95.3	127.9	126.7	88.4	103.1
<b>2001</b>										
March	<b>126.2</b>	120.0	115.3	265.8	114.0	94.8	127.6	125.3	89.0	100.9
June	<b>131.3</b>	124.4	131.2	277.5	115.7	94.8	131.2	127.6	92.4	102.8
September	<b>128.3</b>	120.3	138.7	262.0	106.7	95.1	132.5	125.5	89.6	108.8
December	<b>124.5</b>	117.5	140.4	236.7	99.7	95.6	133.1	123.8	87.3	110.7
<b>2002</b>										
March	<b>122.2</b>	116.2	138.5	219.8	101.3	94.5	131.8	119.3	89.7	114.5
June	<b>119.8</b>	111.4	129.9	233.5	101.1	91.7	129.2	117.0	84.0	115.9
September	<b>120.5</b>	110.1	128.6	251.0	101.2	92.4	129.4	115.9	81.4	116.8
December	<b>119.8</b>	104.7	126.9	262.8	100.8	91.1	129.6	114.7	83.4	117.3
<b>2003</b>										
March	<b>117.7</b>	102.2	118.2	272.3	100.9	88.6	126.1	111.6	82.9	121.8
June	<b>110.5</b>	96.0	107.5	248.6	94.5	85.4	120.3	107.6	82.0	112.6
September	<b>107.3</b>	95.7	103.1	235.5	93.3	83.5	118.5	105.0	73.0	112.8
December	<b>103.1</b>	92.6	95.2	228.0	93.9	79.7	111.8	101.4	68.0	112.1
<b>2004</b>										
March	<b>103.5</b>	99.2	87.5	220.9	101.2	77.3	107.7	102.4	66.3	109.6
June	<b>115.1</b>	111.9	110.7	254.0	112.4	78.5	112.8	106.0	68.9	112.8
September	<b>124.1</b>	118.0	127.1	295.8	124.5	79.3	113.2	108.7	72.7	115.9
December	<b>122.7</b>	117.4	128.2	283.2	123.9	78.8	110.2	107.1	71.9	117.5
<b>2005</b>										
March	<b>122.7</b>	120.0	133.2	269.1	124.7	78.1	108.1	105.1	71.5	112.5
June	<b>137.6</b>	143.8	171.2	308.6	128.3	79.4	110.0	107.8	75.8	113.8
September	<b>145.3</b>	145.4	205.2	339.7	127.1	79.5	111.1	109.2	77.0	118.6

(a) Reference base of each index: 1989-90 = 100.0.

## EXPLANATORY NOTES

### INTRODUCTION

**1** This publication contains indexes measuring changes in the prices of imports of merchandise that are landed in Australia each quarter—the import price index (tables 1–6), and exports of merchandise that are shipped from Australia each quarter—the export price index (tables 7–11).

**2** The indexes are calculated on the reference base 1989–90=100.0.

### SCOPE

**3** The import price index excludes the following items (representing approximately 5% of the value of merchandise imported during the weighting period) because of the inherent difficulties in pricing the items to constant quality (see paragraph 15 below):

- live animals (not for food)
- jewellery and other articles of precious metal n.e.s.
- military equipment
- commodities not classified according to kind
- works of art, collectors' pieces, antiques
- ships of various types.

**4** The export price index includes re-exports of merchandise (i.e. goods which are imported into Australia and exported at a later date without physical transformation).

### CLASSIFICATIONS

**5** Index numbers for selected sections of the Standard International Trade Classification (SITC) are provided in table 3 (import price index) and table 9 (export price index).

**6** The import price index is also presented by End Use Class of the United Nations' Classification by Broad Economic Categories (BEC) in tables 4–6. These have been disaggregated into balance of payments groupings.

**7** The export price index is also presented by balance of payments export groupings in tables 10 and 11. These groupings differ from the balance of payments export groupings used in *International Trade in Goods and Services* (cat. no. 5368.0) due to the difference in grouping confidential international merchandise trade data. For example, sugar is included in 'Other rural' in table 10 of this publication, while it is included in 'Non-rural and other' in table 1 of 5368.0.

### ITEMS AND WEIGHTS

**8** The import price index and export price index are annually reweighted chained Laspeyres indexes. This method of weighting was introduced in the September quarter 2000 and replaces the 'fixed-base' method of weighting in which the weighting patterns are updated infrequently (generally once every 5 or 10 years).

**9** The annual reweighting and chaining process involves a number of steps in order to provide new weights each year. The current weighting basis for the import price index was derived from the average value of import items during 2004-05. This differs slightly from the export price index which has used the average value of export items during 2003-04 and 2004-05, due to the greater volatility associated with the value of export items. These weights were revalued to reflect link period (June quarter 2005) price levels; this means, for example, that the weights for the import price index are effectively determined using quantities from 2004-05 and prices from June quarter 2005. Indexes derived by using the new weights for the September quarter 2005 were then linked to the already published June quarter 2005 (link period) levels which were derived using the previous series weights. Using this methodology, long-term chain linked series can be constructed over time on a consistent reference base for continuity and user convenience, but using annually refreshed weights. The reference base for each index series continues to be 1989-90=100 even though the weights are being updated each year.



## EXPLANATORY NOTES *continued*

### ITEMS AND WEIGHTS *continued*

**10** The commodities directly represented in each index (the index items) were selected on the basis of the significance of their import and export values in the period 2004-05 for imports and 2003-04 & 2004-05 for exports. All significant commodities were selected for pricing. The weights for minor commodities which are not directly priced are included with those of comparable directly priced items whose prices are likely to move in a similar way.

### PRICE MEASUREMENT

**11** In general, prices of individual shipments are obtained from major importers and exporters of the selected items and relate to the quarter in which the imported goods physically arrive in Australia and the exported goods physically leave Australia.

**12** Imports are priced on a 'free on board' (f.o.b.), country of origin basis. Therefore freight and insurance charges involved in shipping goods from foreign to Australian ports are excluded from the prices used in the index, as are Australian import duties and taxes. Similarly, exports are priced on a f.o.b. basis at the main Australian ports of export. Exports are exempt from taxes on products.

**13** As the prices used in the indexes are expressed in Australian currency, changes in the relative value of the Australian dollar and overseas currencies can have a direct impact on price movements for the many commodities that are bought and sold in currencies other than Australian dollars. Prices reported in a foreign currency are converted to Australian dollars using relevant exchange rates. Where imports or exports are transacted in prices expressed in terms of a foreign currency and forward exchange cover is used, the prices in the indexes exclude the forward exchange cover.

**14** The main pricing methodology used is specification pricing, under which a manageable sample of precisely specified products is selected, in consultation with each reporting business, for repeat pricing. In specifying the products, care is taken to ensure that they are fully defined in terms of all the characteristics which influence their transaction prices. As such, all the relevant technical characteristics need to be described (e.g. make, model, features) along with the unit of sale, type of packaging, conditions of sale (e.g. delivered, payment within 30 days), etc. The goods are also specified by country and market in order to lessen the impact of price variations attributable solely to changes over time in the mix of countries, or markets.

**15** When the quality or specifications of an item being priced change over time, adjustments are made to the reported prices so that the index captures only pure price change. That is, any element of price change attributable to a change in quality is removed. If there is an increase (decrease) in the quality of an item, then the price index is adjusted downwards (upwards) to reflect the 'worth' of the quality change. This technique is known as pricing to constant quality.

**16** Wherever possible, prices from volume selling products being traded with predominant countries, or markets, are obtained to ensure specifications have a good chance of being re-priced over time and index series are representative of overall price movements. Individual product weights and weights between markets and countries are regularly reviewed to keep the indexes up to date.

### INDEX NUMBERS

**17** Index numbers for financial years are simple averages of the relevant quarterly index numbers.

### ANALYSIS OF INDEX CHANGES

**18** Care should be exercised when interpreting quarter-to-quarter movements in the indexes as short-term movements do not necessarily indicate changes in trend.

**19** Movements in indexes from one period to another can be expressed either as changes in 'index points' or as percentage changes. The following example illustrates the

## EXPLANATORY NOTES *continued*

### ANALYSIS OF INDEX CHANGES *continued*

method of calculating index points changes and percentage changes between any two periods:

Export price index, All groups index number:

September quarter 2005 129.3 (see table 7)

less September quarter 2004 115.4 (see table 7)

Change in index points 13.9

Percentage change  $13.9/115.4 \times 100 = 12.0$

**20** Tables 2 and 8 provide analyses of the contribution which SITC sections and divisions make to the All groups import price index and export price index, respectively. For example, imports of mineral fuels, etc. contributed 15.59 index points to the All groups import price index number of 115.2 for September quarter 2005 and 2.33 index points to the net change of 2.9 index points between June and September 2005 quarters.

### FURTHER INFORMATION

**21** Further information on recent price index developments in the ABS is presented in the following publications:

*Information Paper: An Analytical Framework for Price Indexes in Australia*, cat. no. 6421.0

*Information Paper: Producer Price Index Developments*, cat. no. 6422.0

*Information Paper: Review of the Import Price Index and Export Price Index, Australia*, cat. no. 6424.0

*Information Paper: Price Indexes and The New Tax System*, cat. no. 6425.0

### RELATED PUBLICATIONS

**22** Users may also wish to refer to the following related publications, which are available from ABS bookshops:

*Producer Price Indexes, Australia*, cat. no. 6427.0

*Consumer Price Index, Australia*, cat. no. 6401.0

*Labour Price Index, Australia*, cat. no. 6345.0

*Australian National Accounts, Input-Output Tables*, cat. no. 5209.0

*Balance of Payments and International Investment Position, Australia*, cat. no. 5302.0

**23** Current publications and other products released by the ABS are listed in the *Catalogue of Publications and Products* (cat. no. 1101.0). The Catalogue is available from any ABS office or the ABS web site <<http://www.abs.gov.au>>. The ABS also issues a daily Release Advice on the web site which details products to be released in the week ahead.

### ABS DATA AVAILABLE ON REQUEST

**24** As well as the statistics included in this and related publications, the ABS has other international trade price index series which are available on request. Inquiries should be made to Steve Whennan on (02) 6252 6251.

## APPENDIX INDEX STRUCTURES & WEIGHTING PATTERNS

### COMPOSITION

Both the Import Price Index and the Export Price Index have been reweighted in the September quarter 2005. This is in line with the ABS' plan to reweight these indexes annually each September quarter, as explained in paragraphs 8 – 10 of the explanatory notes. The new weighting patterns for both the Import Price Index and Export Price Index, based on the Standard International Trade Classification (SITC) (Revision 3), are presented in this Appendix.

All SITC sections and divisions are included in the reweighted index structure for completeness. However, indexes for some of the lower weighted SITC section and divisions are not constructed separately and so are not available for publication.

Corresponding new weighting patterns based on classification by Broad economic Categories (BEC), Harmonized Tariff Item Statistical Classification (HTSIC) and Australian and New Zealand Standard Industrial Classification (ANZSIC) for the Import Price Index and Australian Harmonised Export Commodity Classification (AHECC) and ANZSIC for the Export Price Index are available on request.

### IMPORT PRICE INDEX GROUPED BY SITC (REVISION 3) (a)(b)

SITC	Divisions to Sections	Divisions & Sections to All Groups
0 <b>Food and live animals chiefly for food</b>	<b>100.00</b>	<b>3.91</b>
01 Meat and meat preparations	6.83	0.27
02 Dairy products and eggs	6.91	0.27
03 Fish, crustaceans, molluscs and preparations thereof	17.48	0.68
04 Cereals and cereal preparations	7.39	0.29
05 Vegetables and fruit	19.54	0.76
06 Sugars, sugar preparations and honey	3.20	0.12
07 Coffee, tea, cocoa and spices and manufactures thereof	13.17	0.51
08 Animal feed	4.98	0.19
09 Miscellaneous edible products	20.52	0.80
1 <b>Beverages and tobacco</b>	<b>100.00</b>	<b>0.70</b>
11 Beverages	83.09	0.58
12 Tobacco and tobacco products	16.91	0.12
2 <b>Crude materials, inedible, except fuels</b>	<b>100.00</b>	<b>1.36</b>
21 Hides, skins and furskins, raw	0.09	0.00
22 Oil seeds etc.	3.15	0.04
23 Crude rubber	7.59	0.10
24 Cork and wood	31.86	0.43
25 Pulp and waste paper	12.15	0.17
26 Textiles	7.58	0.10
27 Crude fertilisers and minerals	9.06	0.12
28 Metalliferous ores and metal scrap	14.82	0.20
29 Crude animal materials n.e.s.	13.69	0.19
3 <b>Mineral fuels, lubricants and related materials</b>	<b>100.00</b>	<b>11.81</b>
32 Coal, coke and briquettes	0.12	0.01
33 Petroleum, petroleum products and related materials	98.95	11.69
34 Gas, natural and manufactured	0.93	0.11
4 <b>Animal and vegetable oils, fats and waxes</b>	<b>100.00</b>	<b>0.26</b>
41 Animal oils and fats	4.58	0.01
42 Fixed vegetable fats and oils	83.30	0.22
43 Fats and oils, waxes n.e.s.	12.13	0.03

(a) Standard International Trade Classification (Revision 3).

(b) Indexes for some lower weighted sections/divisions are not available for publication.

## APPENDIX INDEX STRUCTURES & WEIGHTING PATTERNS *continued*

### IMPORT PRICE INDEX GROUPED BY SITC (REVISION 3)(a)(b) *continued*

SITC	Divisions to Sections	Divisions & Sections to All Groups
<b>5 Chemicals and related products n.e.s.</b>	<b>100.00</b>	<b>12.15</b>
51 Organic chemicals	15.96	1.94
52 Inorganic chemicals	5.57	0.68
53 Dyeing, tanning and colouring materials	2.93	0.36
54 Medicinal and pharmaceutical products	38.54	4.68
55 Essential oils and perfume	7.72	0.94
56 Fertilisers (excluding crude)	6.23	0.76
57 Plastics in primary forms	7.77	0.94
58 Plastics in non-primary forms	6.26	0.76
59 Chemical materials and products n.e.s.	9.02	1.10
<b>6 Manufactured goods classified chiefly by material</b>	<b>100.00</b>	<b>12.00</b>
61 Leather, leather manufactures n.e.s.	0.69	0.08
62 Rubber manufactures n.e.s.	10.53	1.26
63 Cork and wood manufactures (excluding furniture)	3.78	0.45
64 Paper, paperboard and articles of paper pulp	14.43	1.73
65 Textile yarn, fabrics, made-up articles n.e.s.	13.15	1.58
66 Non-metallic mineral manufactures n.e.s.	12.20	1.46
67 Iron and steel	18.72	2.25
68 Non-ferrous metals	5.57	0.67
69 Manufactures of metals n.e.s.	20.93	2.51
<b>7 Machinery and transport equipment</b>	<b>100.00</b>	<b>44.21</b>
71 Power generating machinery and equipment	5.15	2.28
72 Machinery specialised for particular industries	9.15	4.05
73 Metal working machinery	1.07	0.48
74 General industrial machinery, equipment and parts	12.43	5.50
75 Office machines and ADP machines	12.36	5.46
76 Telecommunications and sound recording equipment	12.44	5.50
77 Electrical machinery etc. and parts thereof	11.66	5.16
78 Road vehicles	29.65	13.11
79 Other transport equipment	6.08	2.69
<b>8 Miscellaneous manufactured articles</b>	<b>100.00</b>	<b>13.15</b>
81 Prefabricated buildings, fixtures and fittings	2.64	0.35
82 Furniture, parts thereof	9.83	1.29
83 Travel goods, handbags and similar containers	2.87	0.38
84 Articles of apparel and clothing	19.78	2.60
85 Footwear	5.17	0.68
87 Professional, scientific and controlling instruments and apparatus n.e.s.	18.54	2.44
88 Photographic apparatus etc., and optical goods n.e.s., watches and clocks	6.92	0.91
89 Miscellaneous manufactured articles n.e.s.	34.25	4.50
<b>9 Commodities and transactions n.e.s.</b>	<b>100.00</b>	<b>0.45</b>
97 Gold, non-monetary (excluding gold ores and concentrates)	100.00	0.45

(a) Standard International Trade Classification (Revision 3).

(b) Indexes for some lower weighted sections/divisions are not available for publication.

## APPENDIX INDEX STRUCTURES & WEIGHTING PATTERNS *continued*

### EXPORT PRICE INDEX GROUPED BY SITC (REVISION 3)(a)(b)

SITC	<i>Division to Sections</i>	<i>Divisions &amp; Sections to All Groups</i>
<b>0 Food and live animals chiefly for food</b>	<b>100.00</b>	<b>15.29</b>
00 Live animals	4.26	0.65
01 Meat and meat preparations	32.34	4.95
02 Dairy products and eggs	12.63	1.93
03 Fish, crustaceans and molluscs and preparations thereof	6.57	1.00
04 Cereals and cereal preparations	24.49	3.75
05 Vegetables and fruit	6.47	0.99
06 Sugar, sugar preparations and honey	6.49	0.99
07 Coffee, tea, cocoa, spices and manufactures thereof	1.27	0.19
08 Animal feed	2.61	0.40
09 Miscellaneous edible products and preparations	2.87	0.44
<b>1 Beverages and tobacco</b>	<b>100.00</b>	<b>2.18</b>
11 Beverages	96.83	2.11
12 Tobacco and tobacco products	3.17	0.07
<b>2 Crude materials, Inedible, except fuels</b>	<b>100.00</b>	<b>18.76</b>
21 Hides, skins and furskins, raw	2.37	0.45
22 Oil seeds etc	3.98	0.75
23 Crude rubber	0.18	0.03
24 Cork and wood	4.35	0.82
25 Pulp and waste paper	0.31	0.06
26 Textiles	13.09	2.45
27 Crude fertilisers and minerals	2.00	0.37
28 Metalliferous ores and metal scrap	73.01	13.70
29 Crude animal materials n.e.s.	0.71	0.13
<b>3 Mineral fuels, lubricants and related materials</b>	<b>100.00</b>	<b>23.86</b>
32 Coal, coke and briquettes	63.07	15.05
33 Petroleum, petroleum products and related materials	26.10	6.23
34 Gas, natural and manufactured	10.83	2.58
<b>4 Animal and vegetable oils, fats and waxes</b>	<b>100.00</b>	<b>0.21</b>
41 Animal oils and fats	71.07	0.15
42 Fixed vegetable fats and oils	28.04	0.06
43 Animal oils and fats, waxes n.e.s.	0.89	0.00
<b>5 Chemicals and related products n.e.s.</b>	<b>100.00</b>	<b>8.18</b>
51 Organic chemicals	0.12	0.01
52 Inorganic chemicals	49.53	4.05
53 Dyeing, tanning and colouring materials	5.59	0.46
54 Medicinal and pharmaceutical products	26.73	2.18
55 Essential oils and perfume	4.11	0.34
56 Fertilisers (excluding crude)	1.56	0.13
57 Plastics in primary form	3.37	0.28
58 Plastics in non-primary form	2.37	0.19
59 Chemical materials and products n.e.s.	6.62	0.54
<b>6 Manufactured goods classified chiefly by material</b>	<b>100.00</b>	<b>12.54</b>
61 Leather, leather manufactures n.e.s.	2.42	0.30
62 Rubber manufactures n.e.s.	0.75	0.10
63 Cork and wood manufactures (excluding furniture)	1.22	0.15
64 Paper, paperboard and articles of paper pulp	4.52	0.57
65 Textile yarn, fabrics, made-up articles n.e.s.	1.94	0.24
66 Non-metallic mineral manufactures n.e.s.	8.92	1.12
67 Iron and steel	16.78	2.11
68 Non-ferrous metals	59.12	7.41
69 Manufactures of metals n.e.s.	4.33	0.54
<b>7 Machinery and transport equipment</b>	<b>100.00</b>	<b>9.28</b>
71-75 Power generating machinery and equipment	37.71	3.50
76-77 Telecommunications and electrical equipment n.e.s.	18.72	1.74
78 Road vehicles	33.19	3.08
79 Other transport equipment	10.38	0.96

(a) Standard International Trade Classification (Revision 3).

(b) Indexes for some lower weighted sections/divisions are not available for publication.

## APPENDIX INDEX STRUCTURES & WEIGHTING PATTERNS *continued*

### EXPORT PRICE INDEX GROUPED BY SITC (REVISION 3)(a)(b) *continued*

<i>SITC</i>	<i>Division to Sections</i>	<i>Divisions &amp; Sections to All Groups</i>
<b>8</b>	<b>Miscellaneous manufactured articles</b>	<b>100.00</b>
81-82	Prefabricated buildings, building fittings and furniture	5.14
83	Travel goods, handbags and similar containers	0.57
84	Articles of apparel and clothing	6.25
85	Footwear	1.51
87	Professional, scientific and controlling instruments and apparatus n.e.s.	15.35
88	Photographic apparatus etc., and optical goods n.e.s., watches and clocks	13.55
89	Miscellaneous manufactured articles n.e.s.	57.63
<b>9</b>	<b>Commodities and transactions n.e.s.</b>	<b>100.00</b>
93	Special transactions and commodities n.e.s.	29.44
96	Coin (other than gold coin), not being legal tender	1.26
97	Gold, non-monetary (excluding gold ores and concentrates)	69.30

(a) Standard International Trade Classification (Revision 3).

(b) Indexes for some lower weighted sections/divisions are not available for publication.



## FOR MORE INFORMATION . . .

- INTERNET* **www.abs.gov.au** the ABS web site is the best place to start for access to summary data from our latest publications, information about the ABS, advice about upcoming releases, our catalogue, and Australia Now—a statistical profile.
- LIBRARY* A range of ABS publications is available from public and tertiary libraries Australia-wide. Contact your nearest library to determine whether it has the ABS statistics you require, or visit our web site for a list of libraries.
- CPI INFOLINE* For current and historical Consumer Price Index data, call 1902 981 074 (call cost 77c per minute).
- DIAL-A-STATISTIC* This service now provides only current Consumer Price Index statistics call 1900 986 400 (call cost 77c per minute).

## INFORMATION SERVICE

Data already published that can be provided within five minutes will be free of charge. Our information consultants can also help you to access the full range of ABS information—ABS user pays services can be tailored to your needs, time frame and budget. Publications may be purchased. Specialists are on hand to help you with analytical or methodological advice.

- PHONE* 1300 135 070
- EMAIL* [client.services@abs.gov.au](mailto:client.services@abs.gov.au)
- FAX* 1300 135 211
- POST* Client Services, ABS, GPO Box 796, Sydney NSW 2001

## FREE ACCESS TO PUBLICATIONS

All ABS publications can be downloaded free of charge from the ABS web site.

- WEB ADDRESS* [www.abs.gov.au](http://www.abs.gov.au)



2645700009052

ISSN 1445 2588

RRP \$21.00